

# Office Space for Lease Corporate Office Building for Lease 745 W. Hanley Ave., Coeur d' Alene, ID



Lease Rates:  
2nd Floor:  
**\$1.54/SF/Mo.**  
Full Service  
3rd Floor:  
**\$1.63/SF/Mo.**  
Full Service

- New Construction
- State-of-the-Art Building Systems
- 2 floors of Office
- 23,000 SF per floor  
- Demisable to 11,000 SF
- 2 levels of Parking  
- Grade Level Covered/Surface  
- Underground Secured  
- 4/1,000 Parking Ratio
- Private Corporate Campus Setting
- Tenant Improvement Allowance Negotiable
- Located in the Coldwater Creek Coeur d' Alene Campus

See Reverse for  
Floor Plans

#### Contact information

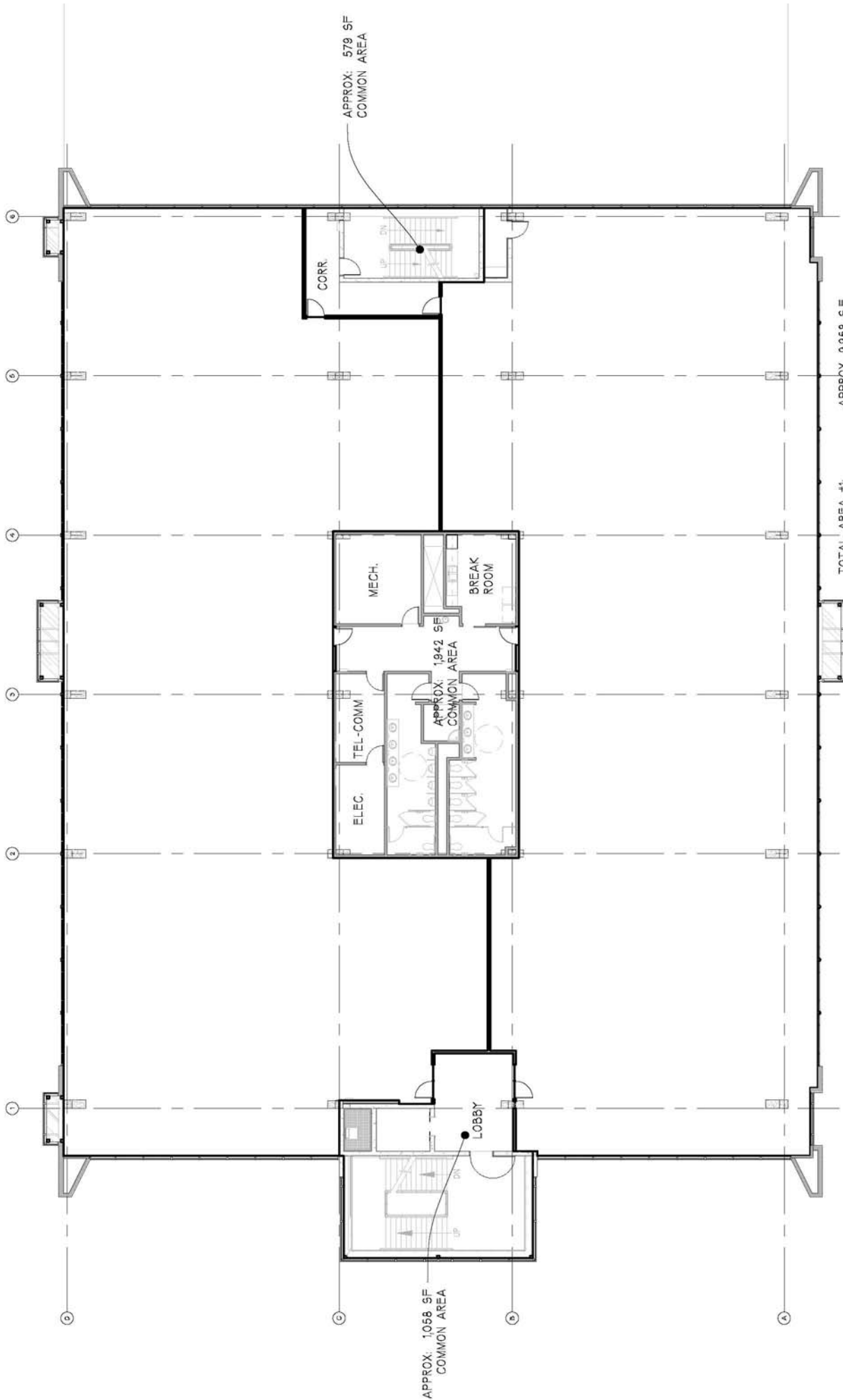
**Christopher D. Bell, Esq.**  
509 622 3538  
cbell@naiblack.com

Black Commercial, Inc.  
107 S. Howard, Suite 500  
Spokane, WA 99201  
direct 509 623 1000  
fax 509 622 3500  
www.naiblack.com



Commercial Real Estate Services, Worldwide.

The information contained herein has been given to us by the owner of the property or other sources we deem reliable, we have no reason to doubt its accuracy, but we do not guarantee it. All information should be verified prior to purchase or lease.



TOTAL AREA #1:	APPROX. 9,958 S.F.
TOTAL AREA #2:	APPROX. 9,948 S.F.
COMMON AREA:	APPROX. 3,579 S.F.
GROSS SF AREA:	APPROX. 23,485 S.F.



**COLDWATER CREEK CcA  
LEVEL 2 PLAN - FULLY DEMISED PLAN**

SCALE: 1/16" = 1'-0"





Lease Pending

APPROX. 1,058 SF  
COMMON AREA

APPROX. 579 SF  
COMMON AREA

APPROX. 1,942 SF  
COMMON AREA

APPROX. 10,032 S.F.  
APPROX. 10,030 S.F.  
APPROX. 3,579 S.F.  
APPROX. 23,641 S.F.

**COLDWATER CREEK Cda  
LEVEL 3 PLAN - FULLY DEMISED PLAN**

SCALE: 1/16" = 1'-0"

